

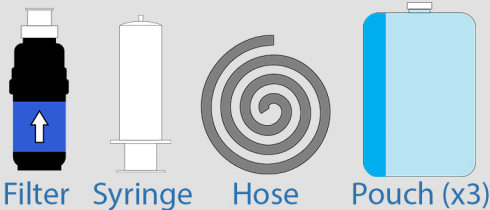
HOW TO: Use Water Filter

BEFORE USING

Always rinse hands **WITH SOAP & WATER** (if possible) before touching water filter to avoid any contamination.

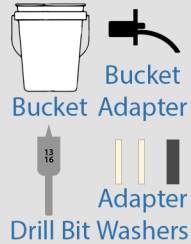


CONTENTS



Filter Syringe Hose Pouch (x3)

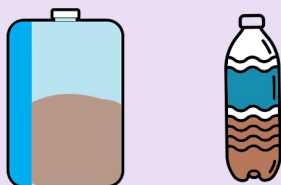
OPTIONAL



Bucket Bucket Adapter Adapter Drill Bit Washers

WATER BOTTLE/POUCH ATTACHMENT

STEP 1



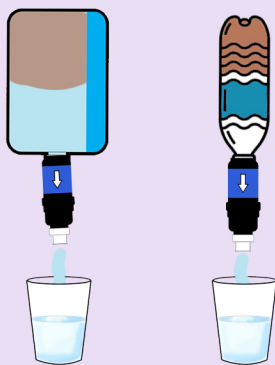
Fill Pouch or Bottle with Dirty Water

STEP 2



Attach Filter to the top of the bottle/pouch

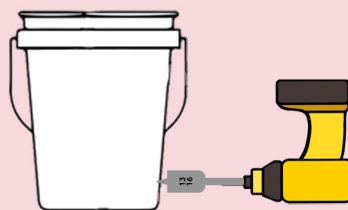
STEP 3



Squeeze bottle/pouch to pour out clean drinking water

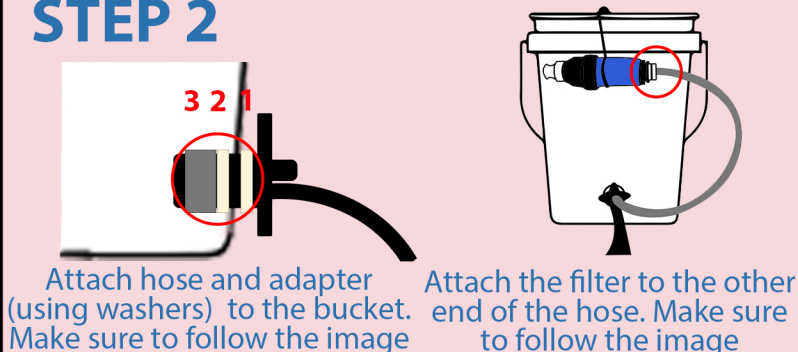
WATER BUCKET ATTACHMENT (if available)

STEP 1



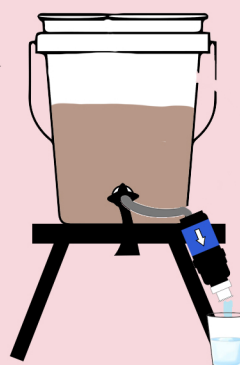
Using **Drill Bit (13/16)**, drill a hole into a bucket (using hand or electric drill), close to the bottom

STEP 2



Attach hose and adapter (using washers) to the bucket. Make sure to follow the image. Attach the filter to the other end of the hose. Make sure to follow the image.

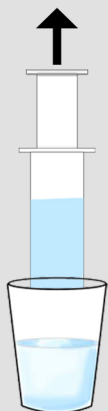
STEP 3



Fill Bucket with dirty water and let gravity pour the water

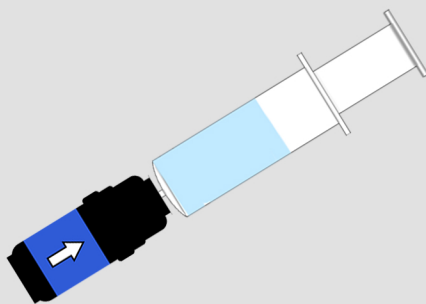
CLEANING THE FILTER

STEP 1



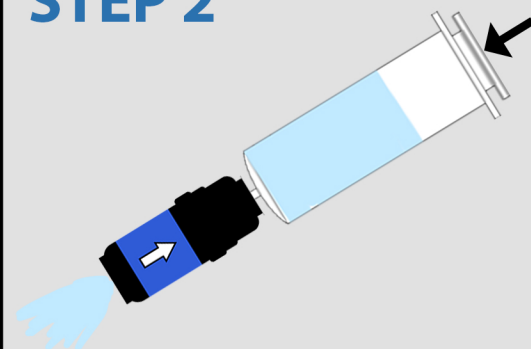
Using **Cleaning Syringe**, suck up **CLEAN WATER**

STEP 2



Remove the white cap of the filter and attach the syringe with clean water to the top of the filter

STEP 2



Push the water through the filter to get rid of any dirty. This is called **BACKWASHING**. Repeat **3 TIMES**

CLEAN WATER IS VERY IMPORTANT FOR LIFE. PLEASE BE CAREFUL WHEN USING FILTER AND KEEP IT CLEAN

CLEANING THE FILTER IS VERY IMPORTANT. PLEASE CLEAN FREQUENTLY. IF WATER COMES OUT DIRTY, TRY CLEANING THE FILTER!